

# Superintendent Schrock Receives Favorable Evaluation From School Board

By Ryan Schlehuber

Superintendent Roger Schrock received an overall rating of 8.6 out of 10 in the board of education's annual evaluation Thursday, March 20. This is his second year as the school's administrator.

The evaluation consisted of 20 questions covering his rela-

tionship with the board, performance on the budget, staff relationships, personal qualities, leadership in education, student relationships, and community relationships. Each of the seven school board members completed the questionnaire.

Averaged among the seven

board members, the superintendent's highest rating was 9.8 for personal qualities, which includes writing and speaking clearly and effectively. His lowest rating, 7.8, was for leadership in education, which includes managing conflicts, professional job performance, and understanding

and knowing all aspects of the educational system.

At its March 20 meeting, the board discussed the evaluation in a 30 minute closed session, but did not discuss the matter after returning to the open meeting.

Dr. Schrock's three-year contract expires June 30, 2009, and he said he is committed to the school and the Island.

"I'm here for the duration," he told the *Town Crier*. "I love it here and I'm looking forward to making good, positive changes."

"Kids come first" is my bumper sticker," he said.

"I'm excited for what's ahead because we have some remodeling projects coming up and we are taking a look at our curriculum, as well."

During the board meeting, Dr. Schrock announced that Janet Couch, a therapist and counselor from Sault Ste. Marie Catholic Services, may be added to the staff, working one day a week with students needing behavioral guidance.

"We don't have a massive problem" with misbehaving students, he said, "but we do have kids that would benefit from that, since we have no guidance counselor." "We can start her one day a week and see if it evolves into something more than that, if we think it's necessary."

Nicole Charbonneau, a resident of the Island and employee of Stonecliffe Resort, will replace high school teacher Jeff Ferguson as the new track

and field coach.

Miss Charbonneau has competed in track on the high school and college level.

Trustee Larry Rickley, a member of the school's building and grounds committee, reported that bids are being sought to replace fascia on the school building and install outdoor lights on the west side and along the sidewalk.

The school will also make minor repairs to the entrance doors, trim trees, and clear debris on the east side of the building. Wood and scrap metal, including inoperable exercise equipment from the school's fitness room, will be removed from the grounds this spring. The shades on the windows in the gymnasium also need to be fixed, the board noted.

An Upper Peninsula company that produces a wood chip product for heating is interested in promoting its product for use at the school, board president, Ben Mosley reported, but board members agreed that transportation and storage costs would probably make the option more expensive than the electric heat now used in the building.

The item was placed on file without any further action or discussion.

## Aerial Ride, Treetop Bridge Planned at Mill Creek

An aerial cable ride and a treetop bridge are new interactive features being added to Historic Mill Creek near Mackinaw City, designed to boost attendance at the site.

In May, visitors to the 625-acre Historic Mill Creek Discovery Park will be able to soar over Mill Creek on a 425-foot-long Eagle's Flight Zip Line and walk through the treetops on the Forest Canopy Bridge. A park naturalist will guide visitors through this high-ropes nature experience.

The bridge is 50 feet high and stretches 165 feet across the forest, allowing visitors to scan the natural beauty of the area while learning of animals and plants from their tour guide.

There is also a 50-foot-high treetop discovery tower where visitors can get a bird's-eye view of the Straits of Mackinac.

"This is a thrilling new way to learn about the natural wonders of our northern Michigan environment," said Phil Porter, director of Mackinac State Historic Parks, which operates Mill Creek. "These experiences will provide insight, education, and understanding."

According to Jeff Dykehouse, curator of natural history, the experience will offer a chance to learn about animals while experiencing the thrill of walking through the forest canopy and gliding over a pond.



Artist Mary Van Abel, at her studio in Cheboygan, finishes painting a large dragonfly, one of a few fiberglass animal structures that will be featured at Historic Mill Creek Discovery Park this summer. Other structures that children will be able to climb and play on are a frog, a bear, and a beaver. (Photograph courtesy of Mary Van Abel)

"Some of the Discovery Park elements will let visitors get up into the different layers of the forest, where they can better learn about the animals that live there," Mr. Dykehouse said.

Attractions for small children are also being added, including a Water Power Station and Forest Friends play area. The Water Power, near the site of the saw mill, allows children to interact with replicas of a saw mill. The Forest Friends play area will include large fiberglass frog, bear, and beaver that children can climb and play on. The animals are being painted by Cheboygan

artist Mary Van Abel.

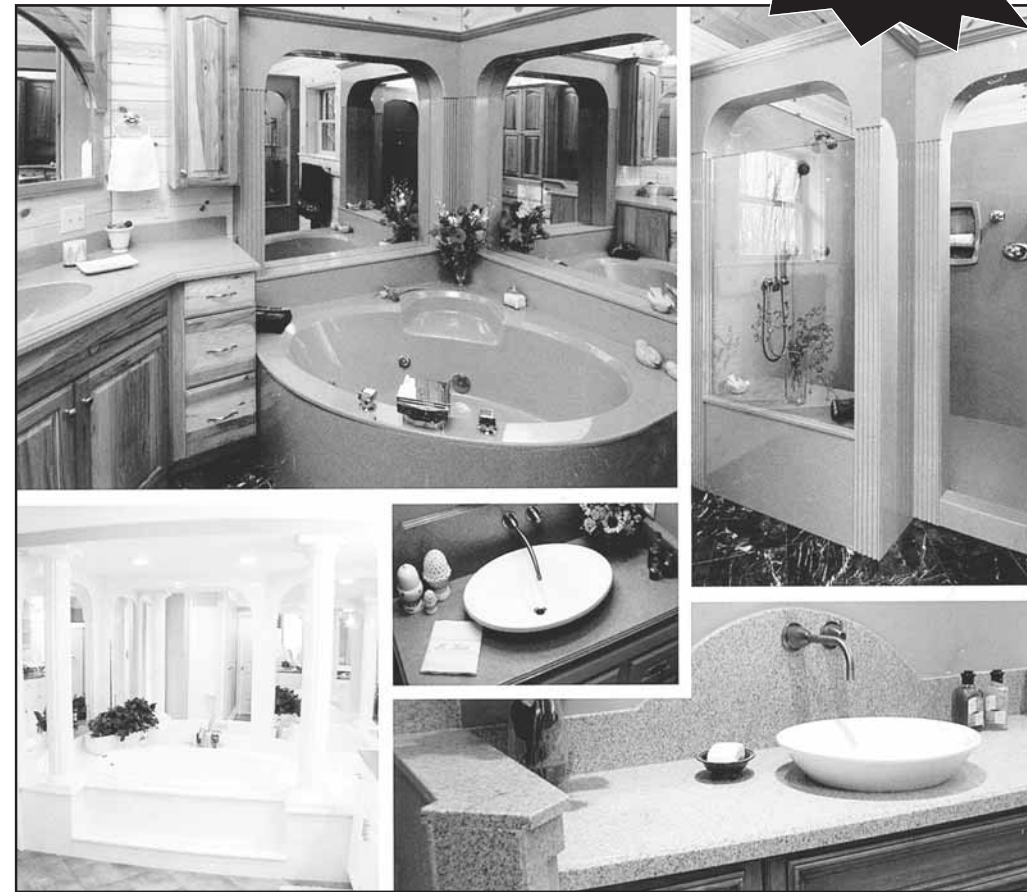
"This initiative takes advantage of new, interactive experiences used in other ecotourism destinations," Mr. Porter said. "Our new programs will combine all of the

\*Please turn to page 23: Mill

**Edward Jones**  
Making Sense of Investing  
Brandon Postma  
(906) 643-6282  
**Edward Jones**  
Member SIPC

*Design Versatility With  
Unmatched Elegance*

**NEW!**



See our Display at the  
Mackinac County Home Show  
Friday, April 18 & Saturday, April 19



**Belongga**  
PLUMBING  
HEATING & COOLING

115 Elliott, St. Ignace  
(906) 643-9595

Open Monday - Friday 8 a.m. to 5 p.m.

**phil lee's**  
HOMES  
America's #1 Stratford Home Builder!

**Stratford Homes**  
CUSTOM MODULAR DESIGNS

*Old-World Charm  
with Today's Best Features!*

**Free detailed price quotes from our plans or yours...**

We custom design for you  
with quality, comfort & affordability in mind!

Call Rick or Cindy for a free Design Ideas Catalog:  
**1-800-332-6884**

Attention Employers

Spring Time is Employee  
Orientation Time

Larry is available to speak to various group types.

Call to schedule your presentation today.

*L. Parel*  
L. Parel, Speaker

P.O. Box 136, Mackinac Island, MI 49757

Phone: 906-847-9162